



MOVE ON UP!

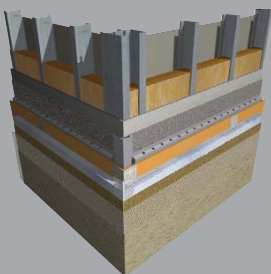
with Parex render systems and Lafarge GTEC
Aqua Board and GTEC Render Board



PAREX THERM and PAREX DIRECT Render Systems



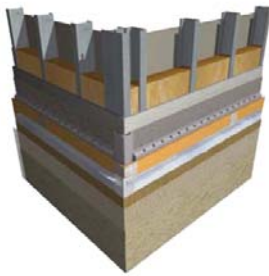
THE MOST ADVANCED THROUGH WALL RENDER
SYSTEM SOLUTION ON THE MARKET



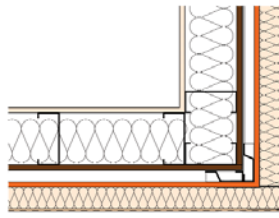
....SYSTEM COMPLETE!

www.parex.co.uk

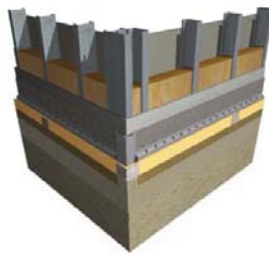




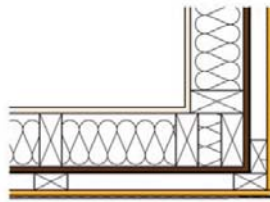
PAREX THERM render system



Lafarge GTEC Aqua Board is suitable for the PAREX THERM render system for steel and timber frame applications



PAREX DIRECT render system



Lafarge GTEC Render Board is suitable for the PAREX DIRECT & PAREX THERM render systems for steel and timber frame applications

PAREX THERM and PAREX DIRECT RENDER SYSTEMS in conjunction with the Lafarge GTEC Aqua Board and GTEC Render Board is the UK's first fully BBA accredited through wall solution using a gypsum based board for external render applications.

GTEC Aqua Board (suitable for PAREX THERM render system)

GTEC Render Board (suitable for PAREX THERM and PAREX DIRECT render systems)

- Up to 30% lighter than cement based boards, easier to handle
- Easy to cut, treat like normal plasterboard, score and snap
- No pre-drilling required, use special Aqua Board fixings
- Fully mould and fungus resistant
- BBA and European Standards certified
- Can be left directly exposed to all weather conditions once installed on a timber or steel frame systems for up to 6 months
- Suitable for timber and steel frame applications

PAREX THERM and PAREX DIRECT

- Suitable for both direct applied and insulated renders systems
- Fully bonded system - no mechanical fixings required
- Multiple textured finishes and thousand's of colour options
- Full fire certification
- Lightweight solutions to meet the new thermal regulation codes
- Meets and conforms to the NHBC performance standards

PAREX



Available from
Howarth Timber & Building Supplies

Prince Edward Works
Pontefract Lane, Leeds LS9 0RA
Tel: 0113 200 0100

HOWARTH TIMBER & BUILDING SUPPLIES
MUCH MORE THAN JUST TIMBER