

Traditional Flush Fitting Bay Dimensions (continued)

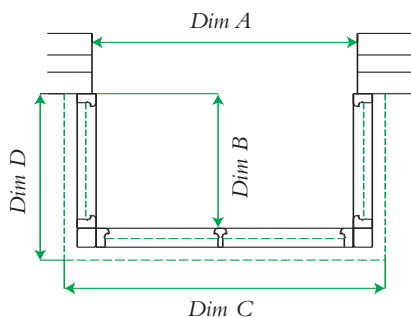
90° SQUARE BAYS

Standard Module

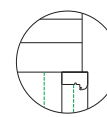
Code	Front Frame	Return Frame	A	B	C	D
SP1	625mm	625mm	1796	338	704	712
SP2	1195mm	625mm	2366	338	1274	712
SP3	1765mm	625mm	2936	338	1844	712
SP4	2335mm	625mm	3506	338	2414	712

Narrow Module

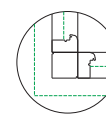
Code	Front Frame	Return Frame	A	B	C	D
SP1N	483mm	483mm	1408	267	562	570
SP2N	910mm	483mm	1835	267	989	570
SP3N	1339mm	483mm	2264	267	1418	570
SP4N	1765mm	483mm	2690	267	1844	570



All Bays conform to the robust construction detail as required by document L



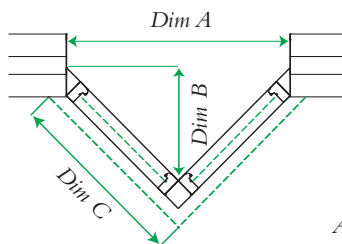
Jamb Detail



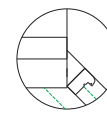
Corner Post Detail

ORIEL BAYS

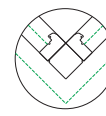
Code	Front Size	A	B	C
Narrow	Module 483mm	1008	504	825
Standard	Module 625mm	808	404	683



All Bays conform to the robust construction detail as required by document L



Jamb Detail



Corner Post Detail



ANTI CAPILLARY GAP

(Left) Both vertical glazing beads and vertical external plant-on bars have an anti capillary gap created where they meet the drained and vented bottom bead.

This design minimises the chance of moisture uptake through the exposed end grain, reducing the likelihood of degradation to both timber and paint finish.

(Right) To improve the aesthetic quality, all of the main frame and sash components are made from clear faced laminated timber



NOTE: All glazed frames now include low-E 24mm glazing. Frames 1500mm high or above, include low-E toughened glass. Window sizes shown are nominal and will be approx 5 mm less than the size shown to allow for building in